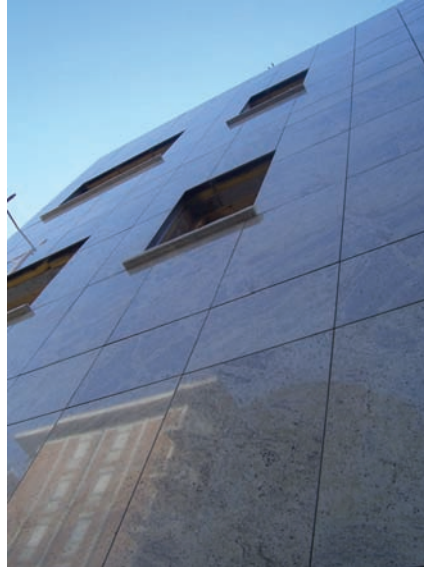
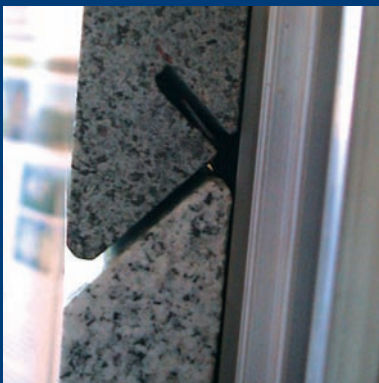


# Generix



## Fast track natural stone rainscreen façade! **Generix**

The Next Generation in total façade solutions!

Generix has evolved following much research and development by Realstone and its partners. This is a multi-material façade system enabling stone, wood, brick-slips terracotta and metal panels to be used on one support system. Sandstone; granite and limestones such as Portland are able to be used on a single fast-track system.

A faster and more economical build along with earlier weather tightness as a necessity to ensure that the schemes can be let as soon as possible.

- Architects are choosing more and more varied façade treatments as an alternative to more traditional products such as bricks and mortar which are more time consuming to install. Bricks are predominately on the critical build path. Generix stone rainscreen is not

- Specialist sub-contractors often find themselves now being asked to take single source responsibility for many different façade treatments, this often involves being responsible for the installation of systems with many different support details and causes many design interface problems
- GENERIX overcomes all of these problems for both the specifier and the specialist subcontractor and allows for generic detailing by the designer and ease of installation by the installer
- GENERIX benefits from a single support system that is designed to carry several different façade types. The system may also be fixed floor to floor and facilitates movement

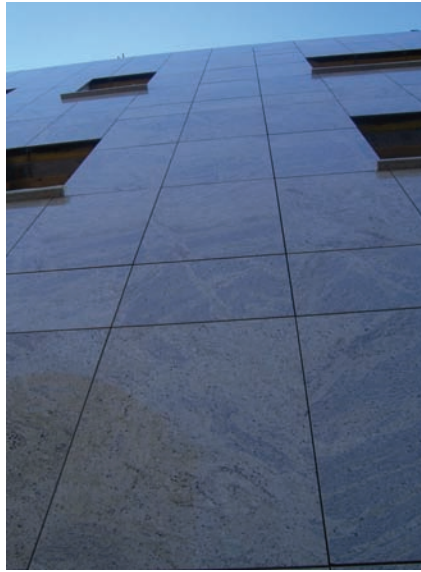
Realstone Head Office UK  
Wingerworth, Chesterfield  
Derbyshire S42 6RG  
England UK

tel +44 (0)1246 270244  
fax +44 (0)1246 220095  
email [sales@realstone.co.uk](mailto:sales@realstone.co.uk)



[www.realstone.co.uk](http://www.realstone.co.uk)

# Generix



- The Generix substructure has been developed with the following remit:
  - High Strength – spanning capabilities
  - Low Weight – high quality extrusions
  - High Speed – ease of installation
  - Universal substructure arrangement – many façade types on one substructure
- GENERIX is a ventilated rainscreen façade solution with the horizontal edges of the panels manufactured at 45°. This permits the use of an open horizontal joint that is more effective than a closed joint system for air and thermal movement; however, the system will still prevent excessive rain penetration even in strong winds
- The panels are secured to the GENERIX vertical rail using the patented two piece stainless steel clip. To prevent vibration, the panels are compressed against a neoprene strip incorporated within the face of the GENERIX rail profile. The neoprene strip is concealed from view to prevent any degradation by ultra-violet light
- The patented two-piece stainless steel clip that secures the panels to the vertical rail requires no drilling or mechanical fixing
- The vertical GENERIX extruded aluminium profile transfers the dead load of the cladding back to the building structure and has an excellent resistance to any imposed wind load or forces. The system has been thoroughly tested and is capable of supporting loads far heavier than most panels specified. The profile has been designed to accommodate any thermal movement of the panels and to eliminate any possible problem due to the atmospheric corrosion or bimetallic reactions between clips and rails
- GENERIX ventilated rainscreen façade system can accommodate the installation of building services such as drainage, electric and telecommunication services, water pipes, ventilators and flues without the need to incorporate bespoke access covers or plates on the visible façade
- The GENERIX substructure is designed to allow the removal and re-installation of the original panel without damage by the use of a special GENERIX tool and clip.

Realstone Head Office UK  
Wingerworth, Chesterfield  
Derbyshire S42 6RG  
England UK

tel +44 (0)1246 270244  
fax +44 (0)1246 220095  
email [sales@realstone.co.uk](mailto:sales@realstone.co.uk)



[www.realstone.co.uk](http://www.realstone.co.uk)