

Ancaster Weatherbed Mix

Specifying the stone

Quarry details

Quarry Farm, Ancaster,
Grantham, Lincolnshire, UK

Supplier

Realstone Limited
Wingerworth
Derbyshire S42 6RG

Contact

sales@realstone.co.uk

Masonry sales

Realstone Head Office UK
Wingerworth, Chesterfield
Derbyshire S42 6RG
England UK

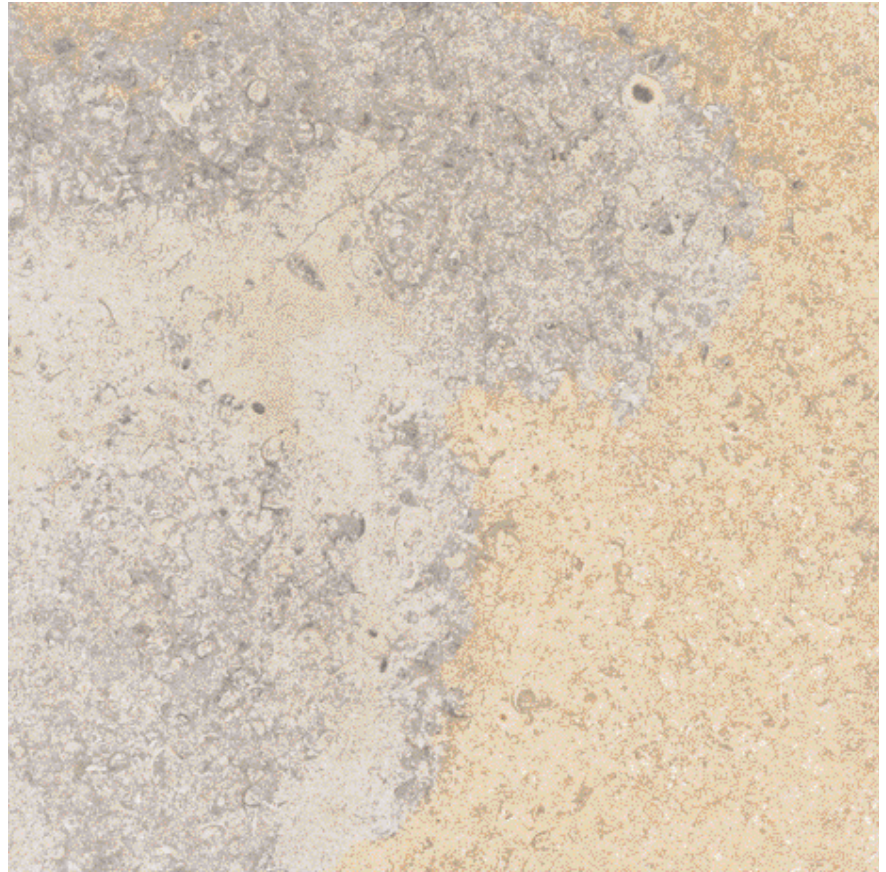
tel +44 (0)1246 270244
fax +44 (0)1246 220095
email sales@realstone.co.uk

Realstone Scotland UK
Barclay Curle Complex
739 South Street, Whiteinch
Glasgow G14 0AH
Scotland UK

tel +44 (0)141 954 1161
fax +44 (0)141 954 1261
email glasgow@realstone.co.uk

Realstone Cumbria UK
Stoneraise Quarry Lazonby
Cumbria CA11 9NF
England UK

tel +44 (0)1768 865811
fax +44 (0)1768 890874
email lazonby@realstone.co.uk



Limestone

Technical results

Description	Durable fine-grained Jurassic limestone with good weathering qualities.	
Country of origin	UK	
Geological type	Jurassic limestone	
Colour	Beige and blue / Clustered shells	
Density	2410 kg/m ³	
Compressive strength	50-100 MPa	BS EN 1926 (1999)
Water absorption	3.92 %	BS EN 13755 (2002)
Porosity	8.3 %	BS EN 1936 (1999)
Durability	Pass	BS EN 1341 (2001)
	Change in flexural strength 0.8 %	
Slip resistance	Dry 82 Wet 82	BS EN 1341 (2001)
Abrasion resistance	31.6mm	BS EN 1341 (2001)
	Light commercial use	
Salt crystallisation	Weight loss -0.51 % Excellent	BS EN 12371
Saturation co-efficient	0.9 %	BRE 89

Please note that stone is a natural product and all results are subject to variation